



## **Vector H200 OEM Board Integrator Guide**

Part No. 875-0340-0 Rev A1



[www.hemispheregps.com](http://www.hemispheregps.com)





## Warranty Notice

**COVERED PRODUCTS:** This warranty covers all products manufactured by Hemisphere GNSS and purchased by the end purchaser (the "Products"), unless otherwise specifically and expressly agreed in writing by Hemisphere GNSS.

**LIMITED WARRANTY:** Hemisphere GNSS warrants solely to the end purchaser of the Products, subject to the exclusions and procedures set forth below, that the Products sold to such end purchaser and its internal components shall be free, under normal use and maintenance, from defects in materials, and workmanship and will substantially conform to Hemisphere GNSS' applicable specifications for the Product, for a period of 12 months from delivery of such Product to such end purchaser (the "Warranty Period"). Repairs and replacement components for the Products are warranted, subject to the exclusions and procedures set forth below, to be free, under normal use and maintenance, from defects in material and workmanship, and will substantially conform to Hemisphere GNSS' applicable specifications for the Product, for 90 days from performance or delivery, or for the balance of the original Warranty Period, whichever is greater.

**EXCLUSION OF ALL OTHER WARRANTIES.** The LIMITED WARRANTY shall apply only if the Product is properly and correctly installed, configured, interfaced, maintained, stored, and operated in accordance with Hemisphere GNSS' relevant User's Manual and Specifications, AND the Product is not modified or misused. The Product is provided "AS IS" and the implied warranties of MERCHANTABILITY and FITNESS FOR A PARTICULAR PURPOSE and ALL OTHER WARRANTIES, express, implied or arising by statute, by course of dealing or by trade usage, in connection with the design, sale, installation, service or use of any products or any component thereof, are EXCLUDED from this transaction and shall not apply to the Product. The LIMITED WARRANTY is IN LIEU OF any other warranty, express or implied, including but not limited to, any warranty of MERCHANTABILITY or FITNESS FOR A PARTICULAR PURPOSE, title, and non-infringement.

**LIMITATION OF REMEDIES.** The purchaser's EXCLUSIVE REMEDY against Hemisphere GNSS shall be, at Hemisphere GNSS' option, the repair or replacement of any defective Product or components thereof. The purchaser shall notify Hemisphere GNSS or a Hemisphere GNSS' approved service center immediately of any defect. Repairs shall be made through a Hemisphere GNSS approved service center only. Repair, modification or service of Hemisphere GNSS products by any party other than a Hemisphere GNSS approved service center shall render this warranty null and void. The remedy in this paragraph shall only be applied in the event that the Product is properly and correctly installed, configured, interfaced, maintained, stored, and operated in accordance with Hemisphere GNSS' relevant User's Manual and Specifications, AND the Product is not modified or misused. NO OTHER REMEDY (INCLUDING, BUT NOT LIMITED TO, SPECIAL, INDIRECT, INCIDENTAL, CONSEQUENTIAL OR CONTINGENT DAMAGES FOR LOST PROFITS, LOST SALES, INJURY TO PERSON OR PROPERTY, OR ANY OTHER INCIDENTAL OR CONSEQUENTIAL LOSS) SHALL BE AVAILABLE TO PURCHASER, even if Hemisphere GNSS has been advised of the possibility of such damages. Without limiting the foregoing, Hemisphere GNSS shall not be liable for any damages of any kind resulting from installation, use, quality, performance or accuracy of any Product.

**HEMISPHERE IS NOT RESPONSIBLE FOR PURCHASER'S NEGLIGENCE OR UNAUTHORIZED USES OF THE PRODUCT.** IN NO EVENT SHALL HEMISPHERE GNSS BE IN ANY WAY RESPONSIBLE FOR ANY DAMAGES RESULTING FROM PURCHASER'S OWN NEGLIGENCE, OR FROM OPERATION OF THE PRODUCT IN ANY WAY OTHER THAN AS SPECIFIED IN HEMISPHERE GNSS' RELEVANT USER'S MANUAL AND SPECIFICATIONS. Hemisphere GNSS is NOT RESPONSIBLE for defects or performance problems resulting from (1) misuse, abuse, improper installation, neglect of Product; (2) the utilization of the Product with hardware or software products, information, data, systems, interfaces or devices not made, supplied or specified by Hemisphere GNSS; (3) the operation of the Product under any specification other than, or in addition to, the specifications set forth in Hemisphere GNSS' relevant User's Manual and Specifications; (4) damage caused by accident or natural events, such as lightning (or other electrical discharge) or fresh/salt water immersion of Product; (5) damage occurring in transit; (6) normal wear and tear; or (7) the operation or failure of operation of any satellite-based positioning system or differential correction service; or the availability or performance of any satellite-based positioning signal or differential correction signal.

**THE PURCHASER IS RESPONSIBLE FOR OPERATING THE VEHICLE SAFELY.** The purchaser is solely responsible for the safe operation of the vehicle used in connection with the Product, and for maintaining proper system control settings. UNSAFE DRIVING OR SYSTEM CONTROL SETTINGS CAN RESULT IN PROPERTY DAMAGE, INJURY, OR DEATH. The purchaser is solely responsible for his/her safety and for the safety of others. The purchaser is solely responsible for maintaining control of the automated steering system at all times. THE PURCHASER IS SOLELY RESPONSIBLE FOR ENSURING THE PRODUCT IS PROPERLY AND CORRECTLY INSTALLED, CONFIGURED, INTERFACED, MAINTAINED, STORED, AND OPERATED IN ACCORDANCE WITH HEMISPHERE GNSS' RELEVANT USER'S MANUAL AND SPECIFICATIONS. Hemisphere GNSS does not warrant or guarantee the positioning and navigation precision or accuracy obtained when using Products. Products are not intended for primary navigation or for use in safety of life applications. The potential accuracy of Products as stated in Hemisphere GNSS literature and/or Product specifications serves to provide only an estimate of achievable accuracy based on performance specifications provided by the satellite service operator (i.e. US Department of Defense in the case of GNSS) and differential correction service provider. Hemisphere GNSS reserves the right to modify Products without any obligation to notify, supply or install any improvements or alterations to existing Products.

**GOVERNING LAW.** This agreement and any disputes relating to, concerning or based upon the Product shall be governed by and interpreted in accordance with the laws of the State of Arizona.

**OBTAINING WARRANTY SERVICE.** In order to obtain warranty service, the end purchaser must bring the Product to a Hemisphere GNSS approved service center along with the end purchaser's proof of purchase. Hemisphere GNSS does not warrant claims asserted after the end of the warranty period. For any questions regarding warranty service or to obtain information regarding the location of any of Hemisphere GNSS approved service center, contact Hemisphere GNSS at the following address:

**Hemisphere GNSS**  
8444 N. 90th Street, Suite 120  
Scottsdale, AZ 85258  
Phone: 480-348-9919 Fax: 480-348-6370  
techsupport@hemispheregps.com

This device complies with part 15 of the FCC Rules. Operation is subject to the following two conditions:

- (1) This device may not cause harmful interference, and
- (2) this device must accept any interference received, including interference that may cause undesired operation.

## Copyright Notice

Copyright Hemisphere GNSS, Inc. (2013). All rights reserved.

No part of this manual may be reproduced, transmitted, transcribed, stored in a retrieval system or translated into any language or computer language, in any form or by any means, electronic, mechanical, magnetic, optical, chemical, manual or otherwise, without the prior written permission of Hemisphere GNSS.

## Trademarks

Hemisphere GPS<sup>®</sup>, the Hemisphere GPS logo, COAST<sup>™</sup>, Crescent<sup>®</sup>, Earthworks<sup>®</sup>, Eclipse<sup>™</sup>, e-Dif<sup>®</sup>, L-Dif<sup>™</sup>, miniEclipse<sup>™</sup>, PocketMAX PC<sup>™</sup>, PocketMAX<sup>™</sup>, PocketMax3<sup>™</sup>, S320<sup>™</sup>, SBX-4<sup>™</sup>, SureTrack<sup>®</sup>, Vector<sup>™</sup>, XF1<sup>™</sup>, and XF2<sup>™</sup> are proprietary trademarks of Hemisphere GNSS, Inc. Other trademarks are the properties of their respective owners.

## Patents

Hemisphere GNSS products may be covered by one or more of the following patents:

U.S. Patents					Australia Patents
6111549	6876920	7400956	8000381	8214111	2002244539
6397147	7142956	7429952	8018376	8217833	2002325645
6469663	7162348	7437230	8085196	8265826	2004320401
6501346	7277792	7460942	8102325	8271194	
6539303	7292185	7689354	8138970	8307535	
6549091	7292186	7808428	8140223	8311696	
6711501	7373231	7835832	8174437	8334804	
6744404	7388539	7885745	8184050	RE41358	
6865465	7400294	7948769	8190337		

Other U.S. and foreign patents pending.

## Notice to Customers

Contact your local dealer for technical assistance. To find the authorized dealer near you:

Hemisphere GNSS, Inc.  
8444 N 90th St, Suite 120  
Scottsdale, AZ 85258 USA  
Phone: (480) 348-9919  
Fax: (480) 348-6370  
[precision@hemispheregps.com](mailto:precision@hemispheregps.com)  
[www.hemispheregps.com](http://www.hemispheregps.com)

## Technical Support

If you need to contact Hemisphere GNSS Technical Support:

Hemisphere GNSS, Inc.  
8444 N 90th St, Suite 120  
Scottsdale, AZ 85258 USA  
Phone: (480) 348-9919  
Fax: (480) 348-6370  
[techsupport@hemispheregps.com](mailto:techsupport@hemispheregps.com)

## Documentation Feedback

Hemisphere GNSS is committed to the quality and continuous improvement of our products and services. We urge you to provide Hemisphere GNSS with any feedback regarding this guide by writing to the following email address: [techsupport@hemispheregps.com](mailto:techsupport@hemispheregps.com).

21. **TERMINATION.** Licensee may terminate this Agreement at any time without cause. Hemisphere may terminate this Agreement on 30 days notice to Licensee if Licensee fails to materially comply with each provision of this Agreement unless such default is cured within the 30 days. Any such termination by a party shall be in addition to and without prejudice to such rights and remedies as may be available, including injunction and other equitable remedies. Upon receipt by Licensee of written notice of termination from Hemisphere or termination by Licensee, Licensee shall at the end of any notice period (a) cease using the Software; and (b) return to Hemisphere (or destroy and provide a certificate of a Senior Officer attesting to such destruction) the Software and all related material and any magnetic or optical media provided to Licensee. The provisions of Sections 6), 7), 8), 9), 10), 15), 21), 26) and 27) herein shall survive the expiration or termination of this Agreement for any reason.
22. **EXPORT RESTRICTIONS.** Licensee agrees that Licensee will comply with all export control legislation of Canada, the United States, Australia and any other applicable country's laws and regulations, whether under the Arms Export Control Act, the International Traffic in Arms Regulations, the Export Administration Regulations, the regulations of the United States Departments of Commerce, State, and Treasury, or otherwise as well as the export control legislation of all other countries.
23. **PRODUCT COMPONENTS.** The Product may contain third party components. Those third party components may be subject to additional terms and conditions. Licensee is required to agree to those terms and conditions in order to use the Product.
24. **FORCE MAJEURE EVENT.** Neither party will have the right to claim damages as a result of the other's inability to perform or any delay in performance due to unforeseeable circumstances beyond its reasonable control, such as labor disputes, strikes, lockouts, war, riot, insurrection, epidemic, Internet virus attack, Internet failure, supplier failure, act of God, or governmental action not the fault of the non-performing party.
25. **FORUM FOR DISPUTES.** The parties agree that the courts located in the State of Arizona and the courts of appeal there from will have exclusive jurisdiction to resolve any disputes between Licensee and Hemisphere concerning this Agreement or Licensee's use or inability to use the Software and the parties hereby irrevocably agree to attorn to the jurisdiction of those courts. Notwithstanding the foregoing, either party may apply to any court of competent jurisdiction for injunctive relief.
26. **APPLICABLE LAW.** This Agreement shall be governed by the laws of the State of Arizona, exclusive of any of its choice of law and conflicts of law jurisprudence.
27. **CISG.** The United Nations Convention on Contracts for the International Sale of Goods will not apply to this Agreement or any transaction hereunder.
28. **GENERAL.** This is the entire agreement between Licensee and Hemisphere relating to the Product and Licensee's use of the same, and supersedes all prior, collateral or contemporaneous oral or written representations, warranties or agreements regarding the same. No amendment to or modification of this Agreement will be binding unless in writing and signed by duly authorized representatives of the parties. Any and all terms and conditions set out in any correspondence between the parties or set out in a purchase order which are different from or in addition to the terms and conditions set forth herein, shall have no application and no written notice of same shall be required. In the event that one or more of the provisions of this Agreement is found to be illegal or unenforceable, this Agreement shall not be rendered inoperative but the remaining provisions shall continue in full force and effect.

positioning and navigation accuracy obtainable with the Software as stated in the Product or Software documentation serves to provide only an estimate of achievable accuracy based on specifications provided by the US Department of Defense for GPS positioning and DGPS service provider performance specifications, where applicable.

10. **WARRANTY DISCLAIMER.** EXCEPT AS EXPRESSLY SET OUT IN THIS AGREEMENT, HEMISPHERE MAKES NO REPRESENTATION, WARRANTY OR CONDITION OF ANY KIND TO LICENSEE, WHETHER VERBAL OR WRITTEN AND HEREBY DISCLAIMS ALL REPRESENTATIONS, WARRANTIES AND CONDITIONS OF ANY KIND INCLUDING FITNESS FOR A PARTICULAR PURPOSE, MERCHANTABILITY, ACCURACY, RELIABILITY OR THAT THE USE OF THE SOFTWARE WILL BE UNINTERRUPTED OR ERROR-FREE AND HEREBY DISCLAIMS ALL REPRESENTATIONS, WARRANTIES AND CONDITIONS ARISING AS A RESULT OF CUSTOM, USAGE OR TRADE AND THOSE ARISING UNDER STATUTE.
11. **LIMITS ON WARRANTY DISCLAIMER.** Some jurisdictions do not allow the exclusion of implied warranties or conditions, so some of the above exclusions may not apply to Licensee. In that case, any implied warranties or conditions which would then otherwise arise will be limited in duration to ninety (90) days from the date of the license of the Software or the purchase of the Product. The warranties given herein give Licensee specific legal rights and Licensee may have other rights which may vary from jurisdiction to jurisdiction.
12. **CHANGE TO WARRANTY.** No employee or agent of Hemisphere is authorized to change the warranty provided or the limitation or disclaimer of warranty provisions. All such changes will only be effective if pursuant to a separate agreement signed by senior officers of the respective parties.
13. **WARRANTY CLAIM.** In the event Licensee has a warranty claim Licensee must first check for and install all Updates that are made available. The warranty will not otherwise be honored. Proof of purchase may be required. Hemisphere does not honor claims asserted after the end of the Warranty Period.
14. **LICENSEE REMEDIES.** In all cases which involve a failure of the Software to conform in any material respect to the documentation during the Warranty Period or a breach of a warranty, Hemisphere's sole obligation and liability, and Licensee's sole and exclusive remedy, is for Hemisphere, at Hemisphere's option, to (a) repair the Software, (b) replace the Software with software conforming to the documentation, or (c) if Hemisphere is unable, on a reasonable commercial basis, to repair the Software or to replace the Software with conforming software within ninety (90) days, to terminate this Agreement and thereafter Licensee shall cease using the Software. Hemisphere will also issue a refund for the price paid by Licensee less an amount on account of amortization, calculated on a straight-line basis over a deemed useful life of three (3) years.
15. **LIMITATION OF LIABILITY.** IN NO EVENT WILL HEMISPHERE BE LIABLE TO LICENSEE FOR ANY INCIDENTAL, CONSEQUENTIAL, SPECIAL OR INDIRECT DAMAGES INCLUDING ARISING IN RELATION TO ANY LOSS OF DATA, INCOME, REVENUE, GOODWILL OR ANTICIPATED SAVINGS EVEN IF HEMISPHERE HAS BEEN INFORMED OF THE POSSIBILITY OF SUCH LOSS OR DAMAGE. FURTHER, IN NO EVENT WILL HEMISPHERE'S TOTAL CUMULATIVE LIABILITY HEREUNDER, FROM ALL CAUSES OF ACTION OF ANY KIND, EXCEED THE TOTAL AMOUNT PAID BY LICENSEE TO HEMISPHERE TO PURCHASE THE PRODUCT. THIS LIMITATION AND EXCLUSION APPLIES IRRESPECTIVE OF THE CAUSE OF ACTION, INCLUDING BUT NOT LIMITED TO BREACH OF CONTRACT, NEGLIGENCE, STRICT LIABILITY, TORT, BREACH OF WARRANTY, MISREPRESENTATION OR ANY OTHER LEGAL THEORY AND WILL SURVIVE A FUNDAMENTAL BREACH.
16. **LIMITS ON LIMITATION OF LIABILITY.** Some jurisdictions do not allow for the limitation or exclusion of liability for incidental or consequential damages, so the above limitation or exclusion may not apply to Licensee and Licensee may also have other legal rights which may vary from jurisdiction to jurisdiction.
17. **BASIS OF BARGAIN.** Licensee agrees and acknowledges that Hemisphere has set its prices and the parties have entered into this Agreement in reliance on the limited warranties, warranty disclaimers and limitations of liability set forth herein, that the same reflect an agreed-to allocation of risk between the parties (including the risk that a remedy may fail of its essential purpose and cause consequential loss), and that the same forms an essential basis of the bargain between the parties. Licensee agrees and acknowledges that Hemisphere would not have been able to sell the Product at the amount charged on an economic basis without such limitations.
18. **PROPRIETARY RIGHTS INDEMNITY.** Hemisphere shall indemnify, defend and hold harmless Licensee from and against any and all actions, claims, demands, proceedings, liabilities, direct damages, judgments, settlements, fines, penalties, costs and expenses, including royalties and attorneys' fees and related costs, in connection with or arising out of any actual infringement of any third party patent, copyright or other intellectual property right by the Software or by its use, in accordance with this Agreement and documentation, PROVIDED THAT: (a) Hemisphere has the right to assume full control over any action, claim, demand or proceeding, (b) Licensee shall promptly notify Hemisphere of any such action, claim, demand, or proceeding, and (c) Licensee shall give Hemisphere such reasonable assistance and tangible material as is reasonably available to Licensee for the defense of the action, claim, demand or proceeding. Licensee shall not settle or compromise any of same for which Hemisphere has agreed to assume responsibility without Hemisphere's prior written consent. Licensee may, at its sole cost and expense, retain separate counsel from the counsel utilized or retained by Hemisphere.
19. **INFRINGEMENT.** If use of the Software may be enjoined due to a claim of infringement by a third party then, at its sole discretion and expense, Hemisphere may do one of the following: (a) negotiate a license or other agreement so that the Product is no longer subject to such a potential claim, (b) modify the Product so that it becomes non-infringing, provided such modification can be accomplished without materially affecting the performance and functionality of the Product, (c) replace the Software, or the Product, with non-infringing software, or product, of equal or better performance and quality, or (d) if none of the foregoing can be done on a commercially reasonable basis, terminate this license and Licensee shall stop using the Product and Hemisphere shall refund the price paid by Licensee less an amount on account of amortization, calculated on a straight-line basis over a deemed useful life of three (3) years.
- The foregoing sets out the entire liability of Hemisphere and the sole obligations of Hemisphere to Licensee in respect of any claim that the Software or its use infringes any third party rights.
20. **INDEMNIFICATION.** Except in relation to an infringement action, Licensee shall indemnify and hold Hemisphere harmless from any and all claims, damages, losses, liabilities, costs and expenses (including reasonable fees of lawyers and other professionals) arising out of or in connection with Licensee's use of the Product, whether direct or indirect, including without limiting the foregoing, loss of data, loss of profit or business interruption.

---

# Contents

---

<b>Chapter 1</b>	<b>Introduction</b>	<b>1</b>
	Overview	2
	What's Included	2
	Integrating the H200	3
	Features of the H200	3
	Configuring the H200	4
	Message Interface	4
	Using VectorPC to Communicate with the H200	4
<b>Chapter 2</b>	<b>Board Overview</b>	<b>5</b>
	Mechanical Layout	6
	Connectors	7
	Mounting Options	7
	Direct Electrical Connection Method	7
	Indirect Electrical Connection (Cable) Method	7
	Header and Pinout Descriptions	8
	Signals	10
	RF Input	10
	Serial Ports	10
	Communication Port D	10
	LED Indicators	11
	1 PPS Timing Signal	11
	Event Marker Input	11
	Grounds	12
	Speed Radar Output	12
	Shielding	12
	Configuration Defaults	13
<b>Chapter 3</b>	<b>Installation</b>	<b>15</b>
	Mounting the Antennas	16
	Mounting Orientation	16
	Planning the Optimal Antenna Placement	17
	Connecting the Antennas to the H200	18
<b>Appendix A</b>	<b>Troubleshooting</b>	<b>19</b>
<b>Appendix B</b>	<b>Technical Specifications</b>	<b>23</b>
<b>Index</b>		<b>27</b>
<b>End User License Agreement</b>		<b>29</b>
<b>Warranty Notice</b>		<b>32</b>

## End User License Agreement

**IMPORTANT** - This is an agreement (the "**Agreement**") between you, the end purchaser ("**Licensee**") and Hemisphere GNSS Inc. ("**Hemisphere**") which permits Licensee to use the Hemisphere software (the "**Software**") that accompanies this Agreement. This Software may be licensed on a standalone basis or may be embedded in a Product. Please read and ensure that you understand this Agreement before installing or using the Software Update or using a Product.

In this agreement any product that has Software embedded in it at the time of sale to the Licensee shall be referred to as a "**Product**". As well, in this Agreement, the use of a Product shall be deemed to be use of the Software which is embedded in the Product.

BY INSTALLING OR USING THE SOFTWARE UPDATE OR THE PRODUCT, LICENSEE THEREBY AGREES TO BE LEGALLY BOUND BY THE TERMS OF THIS AGREEMENT. IF YOU DO NOT AGREE TO THESE TERMS, (I) DO NOT INSTALL OR USE THE SOFTWARE, AND (II) IF YOU ARE INSTALLING AN UPDATE TO THE SOFTWARE, DO NOT INSTALL THE UPDATE AND PROMPTLY DESTROY IT.

HEMISPHERE PROVIDES LIMITED WARRANTIES IN RELATION TO THE SOFTWARE. AS WELL, THOSE WHO USE THE EMBEDDED SOFTWARE DO SO AT THEIR OWN RISK. YOU SHOULD UNDERSTAND THE IMPORTANCE OF THESE AND OTHER LIMITATIONS SET OUT IN THIS AGREEMENT BEFORE INSTALLING OR USING THE SOFTWARE OR THE PRODUCT.

1. **LICENSE.** Hemisphere hereby grants to Licensee a non-transferable and non-exclusive license to use the Software as embedded in a Product and all Updates (collectively the "**Software**"), solely in binary executable form.
2. **RESTRICTIONS ON USE.** Licensee agrees that Licensee and its employees will not directly or indirectly, in any manner whatsoever:
  - a. install or use more copies of the Software than the number of copies that have been licensed;
  - b. use or install the Software in connection with any product other than the Product the Software was intended to be used or installed on as set out in the documentation that accompanies the Software.
  - c. copy any of the Software or any written materials for any purpose except as part of Licensee's normal backup processes;
  - d. modify or create derivative works based on the Software;
  - e. sub-license, rent, lease, loan or distribute the Software;
  - f. permit any third party to use the Software;
  - g. use or operate Product for the benefit of any third party in any type of service outsourcing, application service, provider service or service bureau capacity;
  - h. reverse engineer, decompile or disassemble the Software or otherwise reduce it to a human perceivable form;
  - i. Assign this Agreement or sell or otherwise transfer the Software to any other party except as part of the sale or transfer of the whole Product.
3. **UPDATES.** At Hemisphere's discretion Hemisphere may make Updates available to Licensee. An update ("**Update**") means any update to the Software that is made available to Licensee including error corrections, enhancements and other modifications. Licensee may access, download and install Updates during the Warranty Period only. All Updates that Licensee downloads, installs or uses shall be deemed to be Software and subject to this Agreement. Hemisphere reserves the right to modify the Product without any obligation to notify, supply or install any improvements or alterations to existing Software.
4. **SUPPORT.** Hemisphere may make available directly or through its authorized dealers telephone and email support for the Software. Contact Hemisphere to find the authorized dealer near you. As well, Hemisphere may make available user and technical documentation regarding the Software. Hemisphere reserves the right to reduce and limit access to such support at any time.
5. **BACKUPS AND RECOVERY.** Licensee shall back-up all data used, created or stored by the Software on a regular basis as necessary to enable proper recovery of the data and related systems and processes in the event of a malfunction in the Software or any loss or corruption of data caused by the Software. Licensee shall assume all risks of loss or damage for any failure to comply with the foregoing.
6. **OWNERSHIP.** Hemisphere and its suppliers own all rights, title and interest in and to the Software and related materials, including all intellectual property rights. The Software is licensed to Licensee, not sold.
7. **TRADEMARKS.** "Hemisphere", "Hemisphere GPS", "Hemisphere GNSS", "Crescent", "Eclipse" and the associated logos are trademarks of Hemisphere. Other trademarks are the property of their respective owners. Licensee may not use any of these trademarks without the consent of their respective owners.
8. **LIMITED WARRANTY.** Hemisphere warrants solely to the Licensee, subject to the exclusions and procedures set forth herein below, that for a period of one (1) year from the original date of purchase of the Product in which it is embedded (the "Warranty Period"), the Software, under normal use and maintenance, will conform in all material respects to the documentation provided with the Software and any media will be free of defects in materials and workmanship. For any Update, Hemisphere warrants, for 90 days from performance or delivery, or for the balance of the original Warranty Period, whichever is greater, that the Update, under normal use and maintenance, will conform in all material respects to the documentation provided with the Update and any media will be free of defects in materials and workmanship. Notwithstanding the foregoing, Hemisphere does not warrant that the Software will meet Licensee's requirements or that its operation will be error free.
9. **WARRANTY EXCLUSIONS.** The warranty set forth in Section (8) will not apply to any deficiencies caused by (a) the Product not being used as described in the documentation supplied to Licensee, (b) the Software having been altered, modified or converted in any way by anyone other than Hemisphere approved by Hemisphere, (c) any malfunction of Licensee's equipment or other software, or (d) damage occurring in transit or due to any accident, abuse, misuse, improper installation, lightning (or other electrical discharge) or neglect other than that caused by Hemisphere. Hemisphere does not warrant or guarantee the precision or accuracy of positions obtained when using the Software (whether standalone or embedded in a Product). The Product and the Software is not intended and should not be used as the primary means of navigation or for use in safety of life applications. The potential

## **T**

troubleshooting 20

## **U**

Universal Development Kit 2

## **W**

what's included 2



## **Chapter 1: Introduction**

Overview

What's Included

Integrating the H200

Features of the H200

Configuring the H200

Message Interface

Using VectorPC to Communicate with the H200



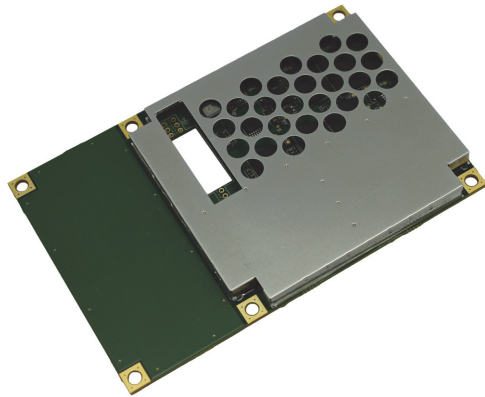
This manual does not cover receiver operation, the VectorPC™ utility, or commands and messages (NMEA 0183, NMEA2000® or Hemisphere GPS proprietary). For information on these subjects refer to the Hemisphere GPS Technical Reference (go to [www.hemispheregps.com](http://www.hemispheregps.com) and click the GPS Reference icon).

This chapter provides an overview of the Crescent® Vector™ H200™ OEM board and information on board integration and key features of the board.

*Note: Throughout the rest of this manual, the Crescent Vector H200 OEM board is referred to simply as the H200.*

## Overview

Fitted with Hemisphere's patented Crescent receiver technology, the H200 computes heading and DGPS position using L1 GPS and GLONASS. Develop robust marine navigation and land solutions in a world full of complex dynamic environments through Hemisphere GPS' advancements in Vector technology. The H200 brings a series of new features to the patented Crescent Vector technology including a more robust heading solution and excellent positioning through RTK. The H200 outputs heading, pitch, and roll.



The H200 also features Hemisphere GPS' exclusive COAST™ technology that enables Hemisphere GPS receivers to utilize aging differential GNSS correction data for 40 minutes or more without significantly affecting positioning quality. The H200 is less likely to be affected by differential signal outages due to signal blockages, weak signals, or interference when using COAST.

## What's Included

The H200 is available in two configurations:

- H200 OEM board only - designed for integrators who are familiar with H200 OEM board integration
- H200 OEM board and Universal Development Kit - designed for integrators who are new to H200 integration (assembly required: OEM board and Universal Development kit sold separately)

The Universal Development Kit is designed to work with various Hemisphere OEM boards and includes an enclosure with carrier board, adapter boards, and various cables.

For more information on the Universal Development Kit go to [www.hemispheregps.com](http://www.hemispheregps.com) and navigate to the Precision OEM Products page.

## Index

### Numerics

1 PPS 11

### A

antennas

mounting orientation 16

mounting overview 16

optimal placement 17

parallel mounting 16

perpendicular mounting 16

available configurations 2

### B

binary messages 4

board layout 6

### C

COAST technology 2

comm port D 10

configuration

defaults 13

configurations available 2

configuring the H200 4

connectors 7

### D

default configurations 13

DGPS position LED indicator 9

differential lock LED indicator 8

direct mounting method 7

### E

event marker input 11

### F

features 3

### G

grounds 12

### H

header pinouts 8

heading lock LED indicator 9

### I

indirect mounting method 7

integration 3

interface connector 7

### L

LED indicators 11

### M

mechanical layout 6

messages

binary 4

NMEA 0183 4

mounting antennas

orientation 16

overview 16

mounting options 7

direct mounting method 7

indirect mounting method 7

### N

NMEA 0183 4

### O

overview of H200 2

### P

parallel mounting orientation (antennas) 16

perpendicular mounting orientation (antennas) 16

pinouts (header) 8

placement of antennas 17

### R

RF connector 7

RF input 10

### S

secondary GPS lock LED indicator 9

serial ports 10

shielding 12

signals

comm port D 10

RF input 10

serial ports 10

speed radar output 12

speed radar pulse 9, 12

speed radar ready signal 9, 12



<sup>4</sup>Based on a 40 second time constant

<sup>5</sup>Hemisphere GNSS proprietary

<sup>6</sup>Receive only, does not transmit this format

<sup>7</sup>Under static conditions

## Integrating the H200

Successful integration of the H200 within a system requires electronics expertise that includes:

- Power supply design
- Serial port level translation
- Reasonable radio frequency competency
- An understanding of electromagnetic compatibility
- Circuit design and layout

The H200 GNSS engine is a low-level module intended for custom integration with the following general integration requirements:

- Regulated power supply input (3.3 VDC  $\pm$  5%) and 1.7 mA continuous current
- Low-level serial port (3.3 V CMOS) and USB port communications
- Radio frequency (RF) input to the engine from a GNSS antenna is required to be actively amplified (10 to 40 dB gain)
- GNSS antenna is powered with a separate regulated voltage source up to 15 VDC maximum
- Antenna input impedance is 50  $\Omega$
- Antenna voltage input is 15 VDC maximum
- Antenna gain input range is 10 to 40 dB

## Features of the H200

Some notable features of the H200 are:

- Multi-channel GNSS engine (12 L1CA GPS, 12 L1P GPS, 12 L1 GLONASS, and 3 channels dedicated to SBAS tracking)
- Sub-meter horizontal accuracy 95%
- Raw measurement output (via documented binary messages)
- Position and heading update rates of 20 Hz maximum
- Quick times to first fix
- Three full-duplex serial ports, a dedicated RTCM input port, and two USB ports (one USB host, one USB device)
- 1 PPS timing output
- Event marker input
- L-band capable (Hemisphere GPS LX-2™ board required)
- Fast RTK acquisition and reacquisition times
- 10 cm RTK-enabled heave accuracy
- Improved heading accuracy with different baseline lengths (up to 5 m)
- Same form factor as Hemisphere GPS' Crescent® Vector II OEM board

*Note: See Appendix B, "Technical Specifications" for complete H200 specifications.*

## Configuring the H200

The H200 has four communication ports: A, B, C, and D. Ports A, B, and C are fully independent and can have different messages output at different rates. You can configure each of these ports for external correction input or output binary message information or RTCM corrections from an outside source. You can also configure the output of ports A, B, or C through any of these ports. Configure the baud rates if necessary; the default is 19200 for Ports A, B, and C.

Port D is reserved for RTCM differential corrections and may be used by the Hemisphere GPS SBX-4™ board (not included with H200).

You can configure the H200 to use the following differential operation modes:

- SBAS
- Beacon (with optional SBX-4 board)
- L-band (with optional LX-2 board)
- External corrections

## Message Interface

The H200 uses a NMEA 0183 interface, allowing you to easily make configuration changes by sending text-type commands to the receiver.

The H200 also supports a selection of binary messages. There is a wider array of information available through the binary messages, plus binary messages are inherently more efficient with data. If the application has a requirement for raw measurement data, this information is available only in a binary format.

For more information on NMEA 0183 commands and messages as well as binary messages refer to the Hemisphere GPS Technical Reference (go to [www.hemispheregps.com](http://www.hemispheregps.com) and click the GPS Reference icon).

## Using VectorPC to Communicate with the H200

Hemisphere's VectorPC is a free utility program that runs on your Windows PC or Windows mobile device. Simply connect your Windows device to the H200 via the COM port and open VectorPC. The screens within VectorPC allow you to easily interface with the H200 to:

- Select the internal SBAS, beacon (with optional SBX-4 board), or L-band (with optional LX-2 board) correction source and monitor reception
- Configure NMEA messages, Vector parameters, and port settings
- Monitor Vector performance and tracking information
- Review heading, pitch, and roll visually
- Automatically calculate heading bias

VectorPC is available for download from the Hemisphere GPS website ([www.hemispheregps.com](http://www.hemispheregps.com)).

**Table B-3: Power specifications**

Item	Specification
Input voltage	3.3 VDC +/- 5%
Power consumption	< 2.1 W nominal GPS (L1) and GLONASS (L1)
Current consumption	< 1.7 A nominal GPS (L1) and GLONASS (L1)
Antenna voltage input	15 VDC maximum
Antenna short circuit protection	Yes
Antenna gain input range	10 to 40 dB
Antenna input impedance	50 Ω

**Table B-4: Environmental specifications**

Item	Specification
Operating temperature	-40°C to +85°C (-40°F to +185°F)
Storage temperature	-40°C to +85°C (-40°F to +185°F)
Humidity	95% non-condensing (when installed in an enclosure)
Shock and Vibration	Mechanical Shock: EP455 Section 5.14.1 Operational (when mounted in an enclosure with screw mounting holes utilized) Vibration: EP455 Section 5.15.1 Random
EMC	CE (IEC 60945 Emissions and Immunity), FCC Part 15, Subpart B, CISPR 22

**Table B-5: Mechanical specifications**

Item	Specification
Dimensions	10.9 L x 7.1 W x 0.5 H (cm) 4.3 L x 2.8 W x 0.2 H (in)
Weight	~ 50 g (~ 1.8 oz)
Status indicators (LEDs)	Power, master GPS lock, secondary GPS lock, differential lock, DGPS position, and heading lock
Power/data connector	34-pin male header, 0.05" pitch
Antenna connectors	MCX, female, straight (x2)

**Table B-6: Aiding devices**

Device	Description
Gyro	Provides smooth heading, fast heading reacquisition, and reliable < 3° heading for periods up to 3 minutes when loss of GPS has occurred. <sup>7</sup>
Tilt sensors	Provide pitch and roll data and assist in fast startup and reacquisition of heading solution.

<sup>1</sup>Depends on multipath environment, antenna selection, number of satellites in view, satellite geometry, baseline length (for local services), and ionospheric activity

<sup>2</sup>Up to 5 km baseline length

<sup>3</sup>Depends on multipath environment, number of satellites in view, and satellite geometry

Table B-1 through Table B-5 provide the internal GNSS sensor, communication, power, mechanical, and environmental specifications of the H200.

**Table B-1: GNSS sensor specifications**

Item	Specification
Receiver type	GNSS L1 RTK
Channels	540
GPS sensitivity	-142 dBm
SBAS tracking	2-channel, parallel tracking
Update rate	Standard 10 Hz, optional 20 Hz (position and heading)
Horizontal accuracy	< 0.02 m 95% confidence (RTK <sup>1,2</sup> ) < 0.6 m 95% confidence (DGPS <sup>1</sup> ) < 2.5 m 95% confidence (autonomous, no SA <sup>3</sup> )
Heading accuracy	< 0.17° rms @ 0.5 m antenna separation < 0.09° rms @ 1.0 m antenna separation < 0.04° rms @ 2.0 m antenna separation < 0.02° rms @ 5.0 m antenna separation
Pitch/roll accuracy	< 1° rms
Heave accuracy	30 cm <sup>4</sup>
Timing (1PPS) accuracy	20 ns
Rate of turn	145°/s maximum
Cold start	< 40 s typical (no almanac or RTC)
Warm start	< 20 s typical (almanac and RTC)
Hot start	< 5 s typical (almanac, RTC, and position)
Heading fix	< 10 s typical (valid position)
Maximum speed	1,850 kph (999 kts)
Maximum altitude	18,288 m (60,000 ft)

**Table B-2: Communications specifications**

Item	Specification
Serial ports	4 full-duplex 3.3 V CMOS (3 main serial ports, 1 differential-only port)
USB ports	1 USB host, 1 USB device
Baud rates	4800 - 115200
Data I/O protocol	NMEA 0183, Crescent binary <sup>5</sup>
Corrections I/O protocol	RTCM SC-104, L-Dif <sup>TM</sup> <sup>5</sup> , RTCM v2 (DGPS), RTCM v3 (RTK), CMR (RTK), CMR+ (RTK) <sup>6</sup>
Timing output	1PPS, CMOS, active high, rising edge sync, 10 k $\Omega$ , 10 pF load
Event marker input	CMOS, active low, falling edge sync, 10 k $\Omega$ , 10 pF load
Heading warning I/O	Pin 62

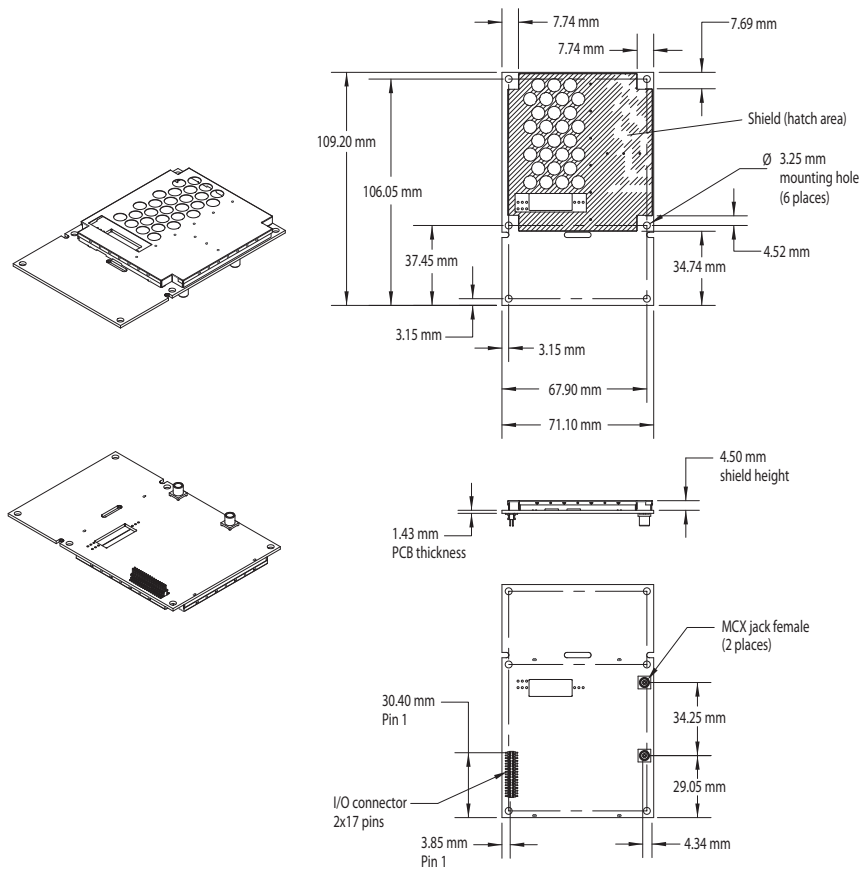


## Chapter 2: Board Overview

Mechanical Layout  
Connectors  
Mounting Options  
Header and Pinout Descriptions  
Signals  
Shielding  
Configuration Defaults

# Mechanical Layout

Figure 2-1 shows the mechanical layout for the H200. All dimensions are in millimeters.



**Figure 2-1: H200 mechanical layout**



## Appendix B: Technical Specifications

**Table A-1: Troubleshooting (continued)**

Symptom	Possible Solution
No heading or incorrect heading values	<ul style="list-style-type: none"> <li>Ensure the antennas are connected to the proper ports: J1000 and J2000 are for the primary and secondary antennas</li> <li>Heading is from primary to secondary antenna, so the secondary antenna should be toward the bow and primary toward the stern</li> <li>Check the measurement of the antenna separation. The Measured (MSEP) and Calculated (CSEP) values are in meters and should agree to within 1 cm. CSEP continuously changes, so average this reading over several minutes to obtain an approximate value</li> <li>Check CSEP value is fairly constant without varying more than 1 cm. Larger variations may indicate a high multipath environment and require moving the antenna locations</li> <li>Reduce antenna separation - Hemisphere GPS recommends that the separation between the antennas remain below 5 m for accurate and timely heading reading output</li> <li>\$JATT,SEARCH command forces the H200 to acquire a new heading solution. This should also be used after entering a new MSEP value</li> <li>Enable gyroaid as this will give heading for up to 3 minutes in times of GNSS signal loss</li> <li>Enable tiltaid to reduce heading search times</li> <li>Check the applications receiver using the \$JAPP query; the receiver should answer \$JAPP,ATTITUD2,ATTITUD2,1,2</li> <li>Monitor the number of satellites and SNR values for both antennas within VectorPC; at least 3 satellites should have SNR values &gt; 20</li> <li>Antenna connectors should both be facing the same direction</li> </ul>

## Connectors

Table 2-1 describes the H200's connectors and the mating connectors. You can use different compatible connectors; however, the requirements may be different. The antenna input impedance is 50  $\Omega$ .

**Table 2-1: H200 connectors**

Connector	H200 SMT Connector	Mating Connector
RF	MCX, straight jack (female) (Johnson: 133-3711-201)	MCX, straight plug (male) (AMP: 1061015-1)
Interface	17x2 pin header plug (male) 0.05 in (1.27 mm) pitch (Samtec: FTSH-117-01-L-DV)	17x2, SMT header socket (female) 0.05 in (1.27 mm) pitch (Samtec: FLE-117-01-G DV)

## Mounting Options

There are two options for mounting the H200:

- Direct Electrical Connection method
- Indirect Electrical Connection (Cable) method

### Direct Electrical Connection Method

Place an RF connector, heading connector, and mounting holes on the carrier board and then mount the H200 on the standoffs and RF header connectors. This method is very cost effective as it does not use cable assemblies to interface the OEM board.

*Note: Be aware of the GNSS RF signals present on the carrier board and ensure the correct standoff height to avoid any flexural stresses on the board when you fasten it down.*

The H200 uses a standoff height of 0.79 cm (0.3125 in). With this height there should be no washers between either the standoff and the H200 or the standoff and the carrier board; otherwise, you must make accommodations. You may need to change the standoff height if you select a different header connector.

If you want to use a right angle MCX connector, use a taller header than the Samtec part number that Hemisphere suggests. This will provide clearance to have a right angle cable-mount connector and reduce the complexity by not having the carrier board handle the RF signals. See Table 2-1 on page 11 for H200 connector information.

The mounting holes of the H200 have a standard inner diameter of 0.32 cm (0.125 in).

### Indirect Electrical Connection (Cable) Method

The second method is to mount the H200 mechanically so you can connect a ribbon power/data cable to the H200. This requires cable assemblies and there is a reliability factor present with cable assemblies in addition to increased expense.

Header and Pinout Descriptions

The H200 uses a dual-row 34-pin (17 pins x 2 rows) header connector to interface with power, communications, and other signals.

To identify the first header pin orient the board so the diamond is to the upper left of the pins; the first pin is on the left directly below the diamond (see Figure 2-2). The pins are then sequentially numbered per row from top to bottom.

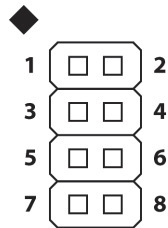


Figure 2-2: Identifying the first pin on the header connector

Table 2-2 provides pinout details for H200 header connector.

Table 2-2: H200 header pinout descriptions

Pin	Name	Type	Description
1	3.3 V	Power	Receiver power supply, 3.3 V
2	3.3 V	Power	Receiver power supply, 3.3 V
3	Antenna Pwr	Power	Antenna power, DC, 5 V max
4	Batt Backup	Power	Backup power input (1.6 - 3.6 VDC, <5 µA consumption)
5	USB DEV+	I/O	USB device data +
6	USB DEV-	I/O	USB device data -
7	GND	Power	Receiver ground
8	GND	Power	Receiver ground
9	PATX	Output	Port A serial output, 3.3 V CMOS, idle high
10	PARX	Input	Port A serial input, 3.3 V CMOS, idle high
11	PBTX	Output	Port B serial output, 3.3 V CMOS, idle high
12	PBRX	Input	Port B serial input, 3.3 V CMOS, idle high
13	PDTX	Output	Port D serial output, 3.3 V CMOS, idle high
14	PDRX	Input	Port D serial input, 3.3 V CMOS, idle high
15	1 PPS	Output	1 PPS, 3.3 V CMOS, active high, rising edge
16	Manual mark	Input	3.3 V CMOS, active low, falling edge
17	Master (primary) GPS lock	Output	Status indicator (M-GPS LED), 3.3 V CMOS, active low, 1 mA max, optional connection
18	Differential lock	Output	Status indicator (DIFF LED), 3.3 V CMOS, active low, 1 mA max, optional connection

Table A-1: Troubleshooting (continued)

Symptom	Possible Solution
No DGPS position in external RTCM mode	<ul style="list-style-type: none"><li>• Verify the baud rate of the RTCM input port matches the baud rate of the external source</li><li>• Verify the pinout between the RTCM source and the RTCM input port (transmit from the source must go to receive of the RTCM input port and grounds must be connected)</li><li>• There is only differential positioning enabled for the primary antenna and RTCM corrections should be input to the primary receiver (either Port A or B)</li><li>• Ensure corrections are being transmitted to the correct port. Using the \$JDIFF,OTHER command on Primary Port A will cause the receiver to expect the corrections to be input through Primary Port B</li></ul>
Non-differential GNSS output	<ul style="list-style-type: none"><li>• Verify SBAS and beacon lock status (or external source is locked)</li><li>• Confirm baud rates match an external source correctly</li><li>• Issue a \$JDIFF command and see if the expected differential mode is in fact the current mode</li><li>• Differential corrections are only applied to the position, not to the heading. If differential lock is lost, you will still have the same heading accuracy, but your position accuracy may be degraded</li></ul>

Use the following checklist to troubleshoot anomalous H200 receiver operation. Table A-1 provides a problem symptom, followed by a list of possible solutions.

**Table A-1: Troubleshooting**

Symptom	Possible Solution
Receiver fails to power	<ul style="list-style-type: none"> <li>Verify polarity of power leads</li> <li>Check integrity of power cable connections</li> <li>Check power input voltage (3.3 VDC +/-5%)</li> <li>Check current restrictions imposed by power source (minimum available should be &gt; 1.0 A)</li> </ul>
No data from H200	<ul style="list-style-type: none"> <li>Check receiver power status LED to ensure that the receiver is powered</li> <li>Verify the H200 is locked to a valid DGPS signal through the LEDs or with the use with VectorPC running on a PC)</li> <li>Verify the H200 is locked to GNSS satellites (this can often be done on the receiving device or with VectorPC)</li> <li>Check integrity and connectivity of power and data cable connections</li> </ul>
Random data from H200	<ul style="list-style-type: none"> <li>Verify that the RTCM or the Bin95 and Bin96 messages are not being output accidentally (send a \$JSHOW command)</li> <li>Verify baud rate settings of the H200 and remote device match correctly</li> <li>Potentially, the volume of data requested to be output by the H200 could be higher than the current baud rate supports, so try using 38400 as the baud rate for all devices or reduce the amount of data being output</li> </ul>
No GNSS lock	<ul style="list-style-type: none"> <li>Check integrity of the antenna cable</li> <li>Verify antennas have unobstructed view of sky</li> <li>Verify the lock status of GNSS satellites (you can do this through the board's LEDs or with the use of VectorPC)</li> </ul>
No SBAS lock	<ul style="list-style-type: none"> <li>Check antenna connections</li> <li>Verify antennas have unobstructed view of sky</li> <li>Verify the lock status of SBAS satellites (you can do this through the board's LEDs or with the use of VectorPC - monitor BER value)</li> <li>SBAS corrections are only applied to the position, not to the heading. If SBAS lock is lost, you will still have the same heading accuracy, but your position accuracy may be degraded.</li> </ul>

**Table 2-2: H200 header pinout descriptions (continued)**

Pin	Name	Type	Description
19	DGPS position	Output	Status indicator (DGPS LED), 3.3 V CMOS, active low, 1 mA max, optional connection
20	Alarm	Output	RTC alarm output
21	CANTX	Output	3.3 V CMOS
22	Secondary GPS lock	Output	Status indicator (S-GPS LED), 3.3 V CMOS, active low, 1 mA max
23	CANRX	Input	3.3 V CMOS
24	Heading lock	Output	Status indicator (HDG LED), 3.3 V CMOS, active low, 1 mA max
25	Speed radar pulse	Output	0 - 3 V variable clock output
26	Speed radar ready signal	Output	Speed valid indicator, 3.3 V CMOS, active low
27	GND	Power	Receiver ground
28	GND	Power	Receiver ground
29	USB HOST +	Output	USB host data +
30	USB HOST -	Output	USB host data -
31	PCTX	Output	Port C serial output, 3.3 V CMOS, idle high
32	PCRX	Input	Port C serial input, 3.3 V CMOS, idle high
33	L-band	Output	3.3 V CMOS
34	Reset	Open collector	Reset, open collector, 3.3 V typical, not required
<p><b>Note:</b> Leave any data or I/O pins unconnected if not in use.</p> <p>The H200 OEM board, the Crescent Vector II OEM board, and the Crescent Vector OEM board differ from their predecessor, the Vector OEM, in that they do not have power supply or communication translation: this must be accomplished by a carrier board.</p>			



## Signals

This section provides more detail on the signals available via connectors.

### RF Input

The H200 is designed to work with active GNSS antennas with an LNA gain range of 10 to 40 dB. The purpose of the range is to accommodate for losses in the cable system. Essentially, there is a maximum cable loss budget of 30 dB for a 40 dB gain antenna. Depending on the chosen antenna, the loss budget will likely be lower (a 24 dB gain antenna would have a 14 dB loss budget).

When designing the internal and external cable assemblies and choosing the RF connectors, do not exceed the loss budget; otherwise, the tracking performance of the H200 will be compromised.

### Serial Ports

The H200 has four serial communication ports:

- Port A, Port B, Port C - main ports
- Port D - Exclusively used to interface with Hemisphere's SBX™ beacon board or an external corrections source. This port will not output normal GNSS-related NMEA messages. When communicating into either Port A, B, or C, a virtual connection may be established to the device on Port D using the \$JCONN command. See "Communication Port D" on page 10 for more information on Port D.

The H200 serial ports' 3.3 V CMOS signal level can be translated to interface to other devices. For example, if serial Ports A, B, and/or C are used to communicate to external devices such as PCs, you must translate the signal level from 3.3 V CMOS to RS-232.

### Communication Port D

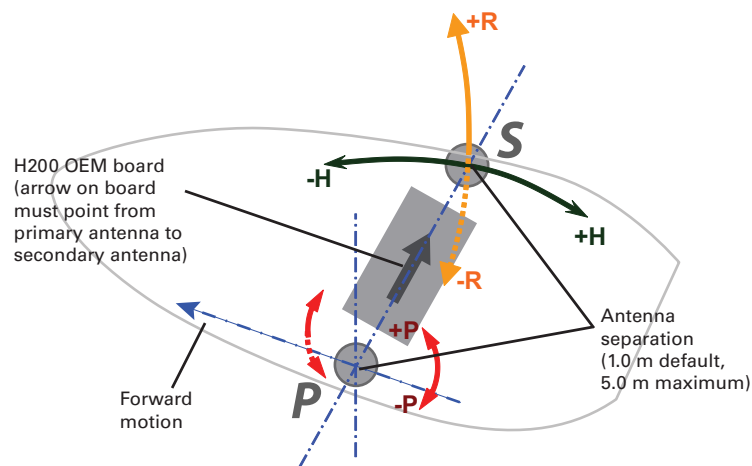
The exclusive function of Port D is for external correction input to the H200. The source of corrections may depend on the geographical use of your final product, market, customer, and positioning performance requirements. If you intend to market products outside of SBAS coverage, you may want to allow your product to be used with external correction input or integrate a second source of corrections along with H200, such as the Hemisphere SBX beacon module. For more information on SBAS refer to the Hemisphere GPS Technical Reference (go to [www.hemispheregps.com](http://www.hemispheregps.com) and click the GPS Reference icon).

If used, Port D will free up the task of Port A, B, or C from being used for external correction input. If you want to support external correction input when the product is in the field, Hemisphere recommends that you offer the facility to the user to input corrections on Port A, B or C, and that Port D remain within the integration only.

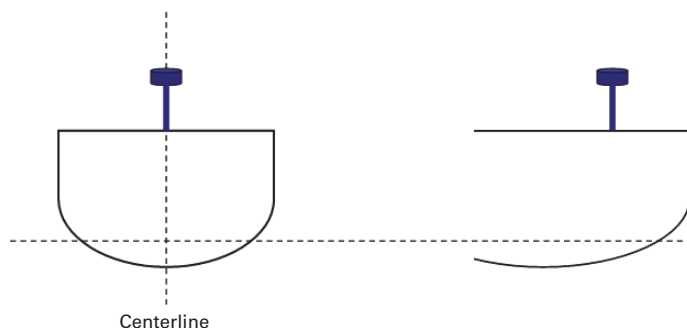
*Note: DGPS corrections are not required for heading accuracies as specified. External corrections will only affect positioning performance.*



## Appendix A: Troubleshooting



**Figure 3-2: Alternate orientation and resulting signs of HPR values**

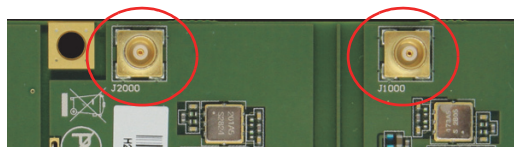


**Figure 3-3: Antenna installation: Cross-section of boat**

## Connecting the Antennas to the H200

Connect the following:

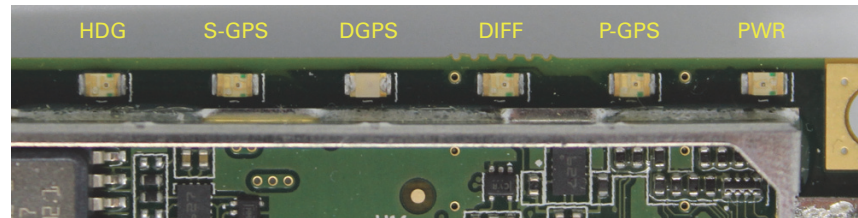
- Primary antenna to J1000 port on the H200
- Secondary antenna to J2000 port on the H200



## LED Indicators

The H200 features the following surface-mounted diagnostic LEDs that indicate board status (see Figure 2-3):

- HDG - Heading lock
- S-GPS - Secondary GPS lock
- DGPS - DGPS position
- DIFF - Differential lock
- P-GPS - Primary GPS lock
- PWR - Power



**Figure 2-3: Onboard LEDs**

With the exception of the PWR LED the signals that drive the LEDs are available via the header connector. Refer to Table 2-2 for pin number descriptions for the H200.

*Note: Each signal pin can offer only 1 mA of current and is active low. Since 1 mA of current may be inadequate for the application, you may want to transistor-buffer these signals to provide more current capacity for acceptable LED luminance.*

## 1 PPS Timing Signal

The one pulse per second (1 PPS) timing signal is used in applications where devices require time synchronization.

*Note: 1 PPS is typical of most GNSS boards but not essential to normal receiver operation. Do not connect the pin if you do not need this function.*

The 1 PPS signal is 3.3 V CMOS active high with rising edge synchronization. The 1 PPS signal is capable of driving a load impedance greater than 10 kΩ in parallel with 10 pF. The pulse is approximately 1 ms.

## Event Marker Input

A GNSS solution may need to be forced at a particular instance, not synchronized with GNSS time depending on the application, such as identifying features during a bathymetric survey.

*Note: Event marker input is typical of most GNSS boards but not essential to normal receiver operation. Do not connect this pin if you do not need this function.*

The event marker input is 3.3 V CMOS active low with falling edge synchronization. The input impedance and capacitance is higher than 10 kΩ and 10 pF respectively, with a threshold of lower than 0.7 V required to recognize the input.

## Grounds

You must connect all grounds together when connecting the ground pins of the H200. These are not separate analog and digital grounds that require separate attention. Refer to Table 2-2 on page 8 for pinout ground information for the H200.

## Speed Radar Output

**Note:** Speed radar output is not essential to normal receiver operation. Do not connect these pins if you do not need this function.

The following two pins on the H200 relate to the Speed Radar.

- Speed Radar Pulse (pin 25) - Outputs a square wave with 50% duty cycle. The frequency of the square wave varies directly with speed. 97 Hz represents a speed of 1 m/s (3.28 ft/s).
- Speed Radar Ready Signal (pin 26) - Indicates when the speed signal on the "Speed Radar Pulse" pin is valid. In static situations, such as when the vehicle has stopped, the GNSS position may still have slight variations from one moment to the next. During these instances, the signal on the 'Speed Radar Ready Signal' pin is 'high' (or +Vcc), indicating the speed coming out of the 'Speed Radar Pulse' pin is erroneous and not truly indicative of the GNSS receiver's actual speed. **Therefore, it should not be referred to or be used.** Once the vehicle starts moving again and meets a minimum threshold speed, the output on the 'Speed Radar Ready Signal' pin will go 'low' indicating valid speed information is present on the 'Speed Radar Pulse' pin.

*Note: Neither pin 25 nor pin 26 has any form of isolation or surge protection. If utilizing the Speed Radar Pulse output, Hemisphere strongly recommends incorporating some form of isolation circuitry into the supporting hardware. Contact Hemisphere Technical Support for an example of an optically isolated circuit.*

## Shielding

Typically, the H200 does not require shielding for improving immunity to RF noise incident upon the board and its various devices. You may, however, wish to shield the H200 from the rest of the integration if you determine it interferes with other devices or systems.

If you are designing a smart antenna based on the H200 (the H200 and the two GNSS antennas in close proximity), you will likely want to shield the H200 so that it does not interfere with the incoming GNSS signals to the antenna.

## Planning the Optimal Antenna Placement

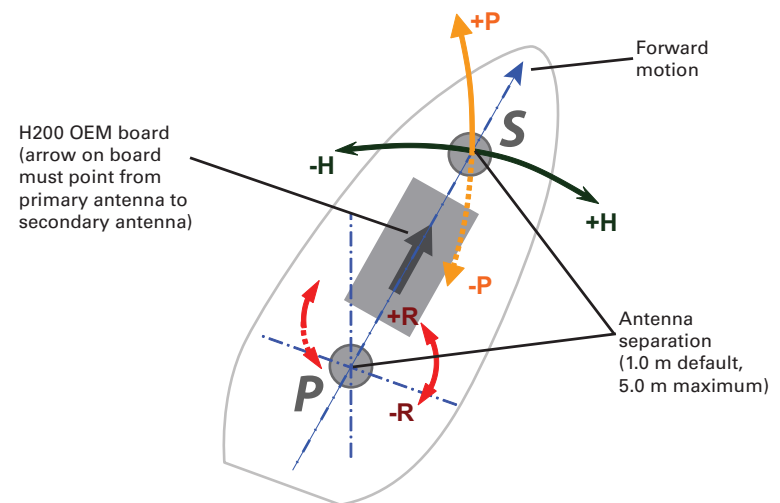
Proper antenna placement is important to obtain a high-precision GNSS reading. Place the antennas:

- With a clear view of the horizon
- Away from other electronics and antennas
- Along the vessel's centerline

**⚠ WARNING:** You must install the primary antenna along the vessel's centerline; you cannot adjust the position readings if the primary antenna is installed off the centerline. Positions are computed for the primary antenna.

- On a level plane
- With a 5.0 m maximum separation (default of 1.0 m)
- Away from radio frequencies
- As high as possible
- For optimal performance, orient the antennas so the antennas' connectors face the same direction.

Figure 3-1 below through Figure 3-3 on page 18 provide examples of mounting orientation.



**Figure 3-1: Recommended orientation and resulting signs of HPR values**

The inclusion of the tilt sensor and gyro in the H200 makes it more complicated to configure than many traditional pieces of GNSS equipment. The following steps summarize the primary installation steps and the things you need to consider to successfully install the H200.

## Mounting the Antennas

The H200 is compatible with the following Hemisphere GPS single and dual frequency antennas:

- Single frequency: A21 and A31 (beacon)
- Dual frequency: A42 and A43 (beacon)

When mounting the antennas, consider the following:

- Mounting orientation (parallel or perpendicular)
- Proper antenna placement

## Mounting Orientation

The H200 outputs heading, pitch, and roll readings regardless of the orientation of the antennas. However, the relation of the antennas to the boat's axis determines whether you will need to enter a heading, pitch, or roll bias. The primary antenna is used for positioning and the primary and secondary antennas, working in conjunction, output heading, pitch, and roll values.

*Note: Regardless of which mounting orientation you use, the H200 provides the ability to output the heave of the machine via the \$GPHEV message. For more information on this message refer to the Hemisphere GPS Technical Reference (go to [www.hemispheregps.com](http://www.hemispheregps.com) and click the GPS Reference icon).*

**Parallel Orientation:** The most common installation is to orient the antennas parallel to, and along the centerline of, the axis of the boat. This provides a true heading. In this orientation:

- If you use a gyrocompass, you can enter a heading bias in the H200 to calibrate the physical heading to the true heading of the vessel.
- You may need to adjust the pitch/roll output to calibrate the measurement if the Vector is not installed in a horizontal plane.

**Perpendicular Orientation:** You can also install the antennas so they are oriented perpendicular to the centerline of the boat's axis. In this orientation:

- You will need to enter a heading bias of +90° if the primary antenna is on the starboard side of the boat and -90° if the primary antenna is on the port side of the boat.
- You will need to configure the receiver to specify the GNSS antennas are measuring the roll axis using \$JATT,ROLL,YES.
- You will need to enter a roll bias to properly output the pitch and roll values.
- You may need to adjust the pitch/roll output to calibrate the measurement if the Vector is not installed in a horizontal plane.

## Configuration Defaults

The following represents the standard configuration for the H200. For more information on these commands refer to the Hemisphere GPS Technical Reference (go to [www.hemispheregps.com](http://www.hemispheregps.com) and click the GPS Reference icon).

```
$JOFF, PORTA
$JOFF, PORTB
$JOFF, PORTC

$JBAUD, 19200, PORTA
$JBAUD, 19200, PORTB
$JBAUD, 19200, PORTC

$JAGE, 2700
$JLIMIT, 10
$JMASK, 5
$JNP, 7
$JWAASPRN, AUTO
$JDIFF, WAAS
$JPOS, 51.0, -114.0
$JSMOOTH, LONG
$JTAU, COG, 0.00
$JTAU, SPEED, 0.00
$JAIR, AUTO
$JALT, NEVER

$JATT, HTAU, 2.0
$JATT, HRTAU, 2.0
$JATT, COGTAU, 0.0
$JATT, MSEP, 0.500
$JATT, GYROAID, YES
$JATT, TILTAID, YES
$JATT, LEVEL, NO
$JATT, EXACT, NO
$JATT, HIGHMP, YES
$JATT, FLIPBRD, NO
$JATT, HBIAS, 0.0
$JATT, NEG TILT, NO
$JATT, NMEAHE, 0
$JATT, PBIAS, 0.0
$JATT, PTAU, 0.5
$JATT, ROLL, NO
$JATT, SPDTAU, 0.0

$JASC, GP GGA, 1, PORTA
$JASC, GPVTG, 1, PORTA
$JASC, GP GSV, 1, PORTA
$JASC, GPZDA, 1, PORTA
$JASC, GP HDT, 1, PORTA
$JASC, GPROT, 1, PORTA
$JASC, GP GGA, 1, PORTB
$JASC, GPVTG, 1, PORTB
$JASC, GP GSV, 1, PORTB
$JASC, GPZDA, 1, PORTB
$JASC, GP HDT, 1, PORTB
$JASC, GPROT, 1, PORTB
$JSAVE
```



## **Chapter 3: Installation**

Mounting the Antennas

Connecting the Antennas to the H200